



Global Water  
Partnership  
Central and Eastern Europe



**DANUBE  
WATER  
PROGRAM**

Smart policies, strong utilities, sustainable services

# SESSION 3

## IMPACTS AND RESPONSE ACTIVITIES FROM WATER- RELATED SECTORS

### GROUP 2

Moderator: Robert Stefanski, WMO  
Reporter: Sabina Bokal, GWP CEE

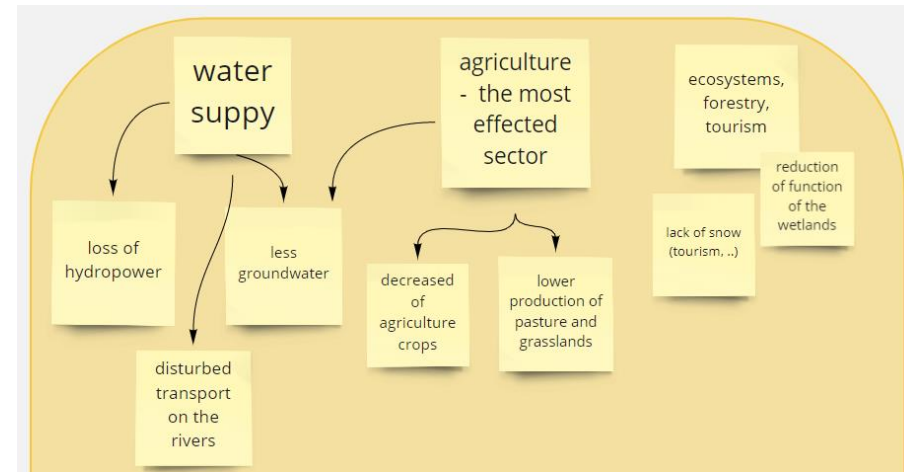
# OBSERVED DROUGHT IMPACTS

## Cascades of different multi-impacts:

- water supply – agriculture – ecosystems - ...

## Collection of impacts:

- need for establishment of ongoing collection of drought impacts
- *Existing databases:*
  - European Drought Impacts Inventory (EDII)
  - EDO - collecting drought info from the news via different languages
  - ICPDR – collecting drought impacts for 2015



**Verification of ground impacts -**  
Important part of the drought plan.

*How to do it?*

- National reporting networks for the Danube (DriDanube) – based on CZ, SK example
- Crowdsourcing – public participation

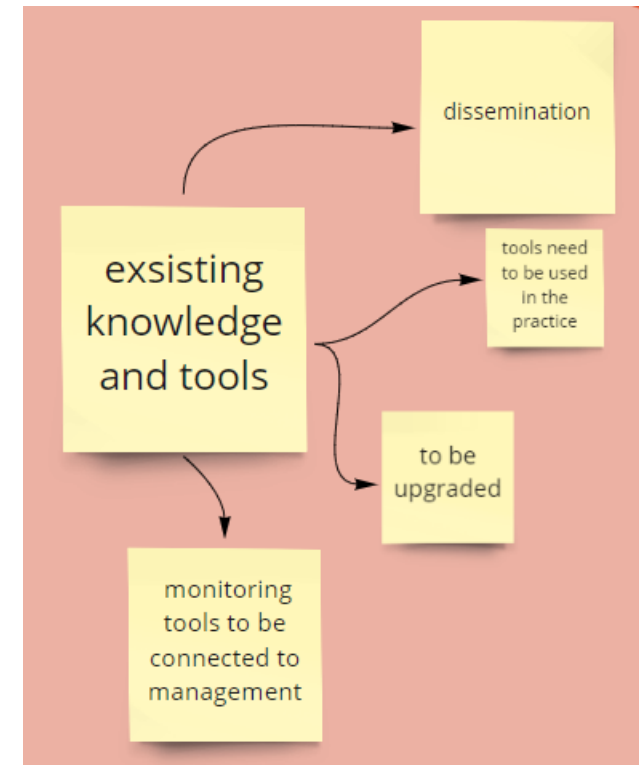
# PAST AND ONGOING ACTIVITIES TO IMPROVE RESILIENCE

## Regional / transboundary level:

- DMCSEE, IDMP CEE, DriDanube, other projects, ...
- use and exchange on existing knowledge and tools

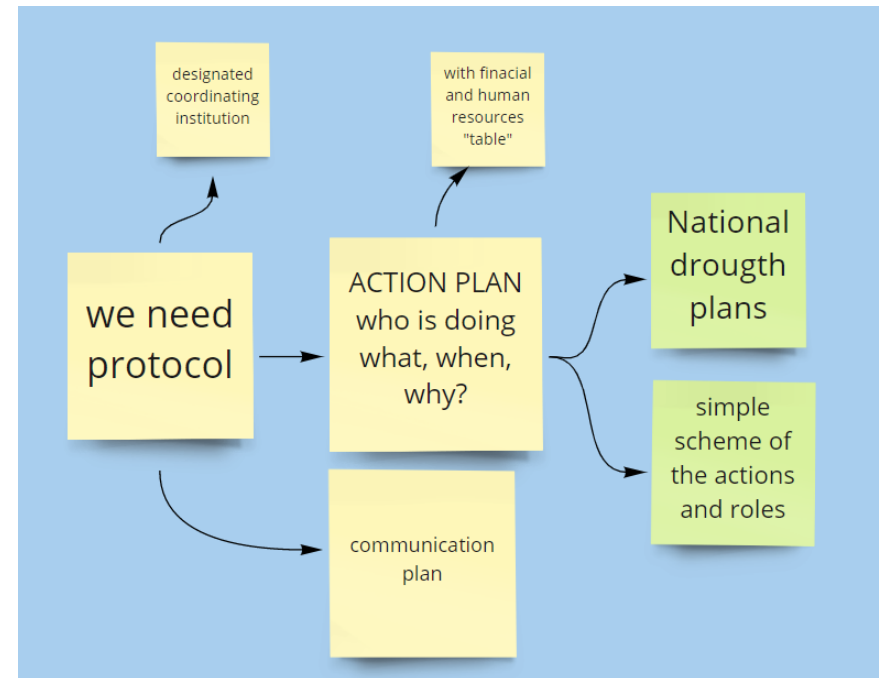
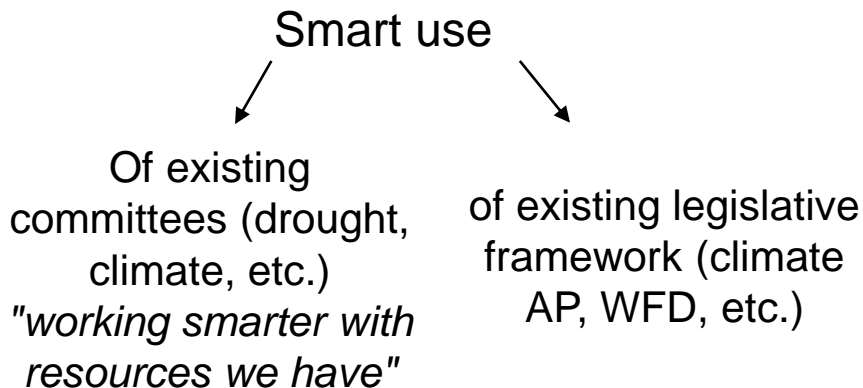
## National level:

- Sharing information/data – coordinate
- Capacity building for users and experts
- Cooperation with NGOs
- Education, youth, elderly people



# CHALLENGES AND ENABLING ENVIRONMENT

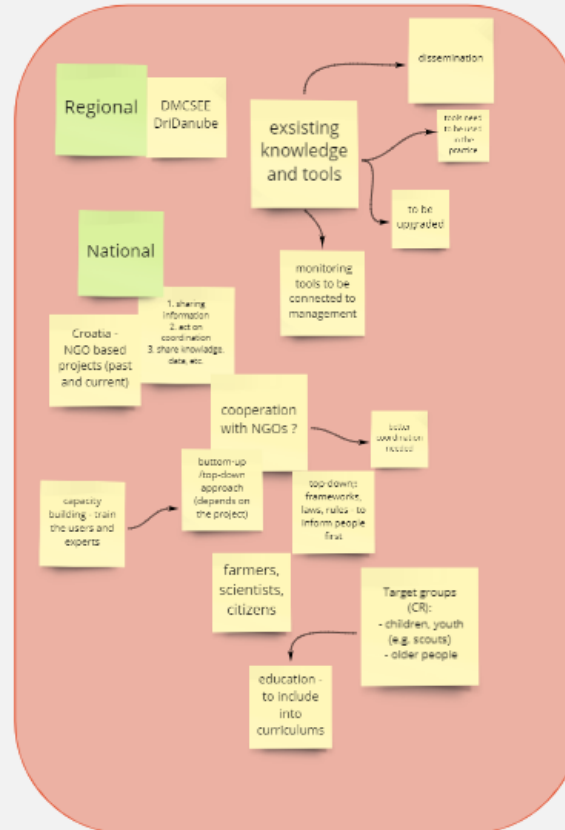
- Guidance is there / Protocols are needed
- Early warning systems
- Education, awareness (youth involvement)
- Better communication (especially on transboundary level)



## Observed drought impacts



## Past and ongoing activities to improve resilience



## Implementation challenges and enabling environment for pro-active approach

